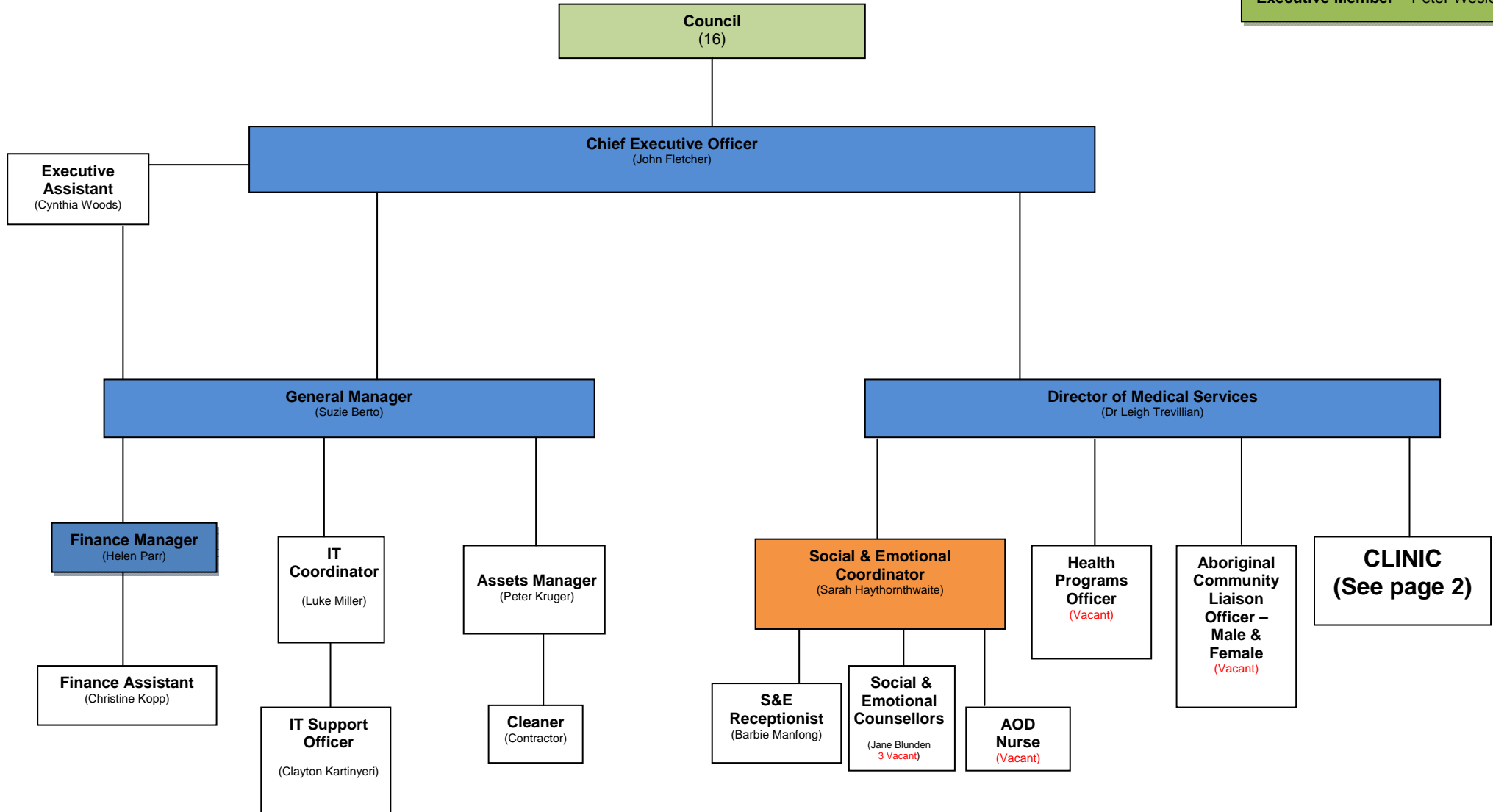


Executive Management Group

WURLI-WURLINJANG ABORIGINAL CORPORATION
 Trading as Wurli Wurlinjang Health Services as at March 27, 2009
Confidential - STRUCTURE – FLOW CHART (with names)

Council
 President – Ian Woods
 Vice President – Noelene Andrews
 Treasurer – Robert Campbell
 Secretary – Juanita Heparia
 Executive Member – Noel McDonald
 Executive Member – Peter Wesley



Coordinator's Group

WURLI-WURLINJANG ABORIGINAL CORPORATION
 Trading as **Wurli Wurlinjang Health Services** as at March 27, 2009
Confidential – STRUCTURE – FLOW CHART (with names)

Council
 President – Ian Woods
 Vice President – Noelene Andrews
 Treasurer – Robert Campbell
 Secretary – Juanita Heparia
 Executive Member – Noel McDonald
 Executive Member – Peter Wesley

